

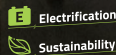
ZOOMLION

NEW ZX27AE SPIDER LIFT

HIGHLIGHTS

- ▶ 0.89m ultra-narrow width, quick-change work platform, easy access to compact spaces
 - ▶ Pure lithium-ion battery power features environmental protection and quiet operation
 - ▶ Accurate and efficient permanent magnet synchronous motor provides strong power and stable control
 - ▶ Non-marking rubber track suitable for all terrains
 - ▶ Central layout, great structural rigidity, and small boom deflection
 - ▶ Bus hydraulic valve control system offers stable and reliable movement
- Advanced energy management system supports synchronous power supply
- ▶ from external power supply, providing long-lasting battery life

CE Certified



FEATURES

Standard Features

- ▶ Proportional control
- ▶ All motion alarm
- ▶ Flashing beacon
- ▶ Self-closing entry gate
- ▶ Emergency descent system
- ▶ Emergency stop button
- ▶ Auto-leveling system
- ▶ On-board diagnostic system
- ▶ Auto-leveling outrigger
- ▶ Non-marking rubber track
- ▶ Load sensing system
- ▶ Color display
- ▶ Horn
- ▶ Hour meter
- ▶ Use while charging
- ▶ Wireless remote
- ▶ Proportional handle steering
- ▶ 60A Lithium-ion Battery Smart Charger
- ▶ Battery level display
- ▶ Low battery protection

Accessories & Options

- ▶ AC power to platform
- ▶ Air line to platform

ACCESS WITH ZOOMLION GREEN

Phone: 0086(731)-88353680 0086(731)-88250971
E-mail: awm@zoomlion.com

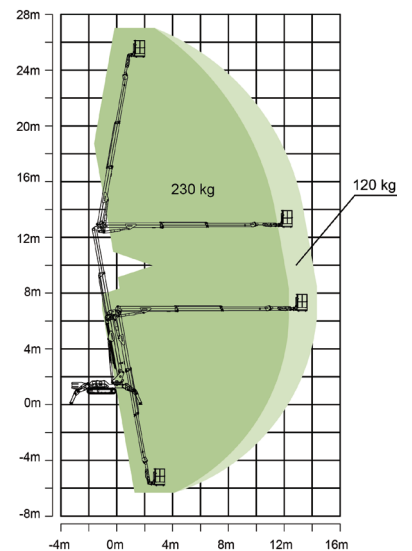
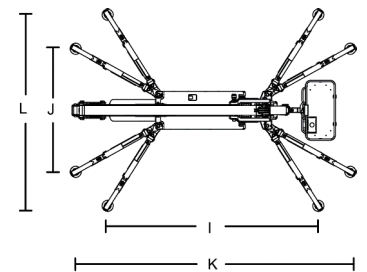
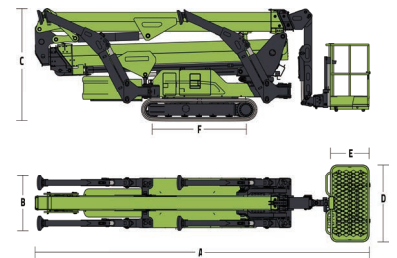
Add: ZOOMLION Wangcheng Industrial Park, Tengfei Road 997, Changsha, Hunan, China
Web: www.en.zoomlion.com

MAIN SPECS OF TELESCOPIC BOOM LIFTS

ZX27AE

Comply with CE Standards

Model	ZX27AE	
	Metric	Imperial
Size		
Work Height	27m	88ft 7in
Platform Height	25m	82ft
Horizontal Outreach	14.2m	49ft 7in
Up and Over Height	12.7m	41ft 8in
Below Ground Reach	5.8m	19ft
A - Stowed Length (w/ platform)	6.15m	20ft 2in
D - Stowed Length (w/o platform)	5.7m	18ft 8in
B - Stowed Width	0.89m	2ft 11in
C - Stowed Height	2.05m	6ft 9in
E - Platform Length	1.4m	4ft 7in
F - Platform Width	0.7m	2ft 4in
G - Platform Height	1.25m	4ft 1in
H - Crawler Size (Length×Width)	1.52m×0.25m	4ft 11in × 10in
I - Max Length w/ Outrigger Extending (Standard)	4.95m	16ft 3in
J - Max Width w/ Outrigger Extending (Standard)	4.48m	14ft 8in
K - Max Length w/ Outrigger Extending (Narrow)	6.45m	21ft 2in
L - Max Width w/ Outrigger Extending (Narrow)	2.88m	9ft 5in
Outrigger Pad Size (Diameter)	0.26m	10ft
Approach Angle		15°
Departure Angle		24°
Performance		
Platform Capacity	230kg(restricted) 120kg(unrestricted)	510lb (restricted) 265lb (unrestricted)
Drive Speed	2km/h	
Gradeability		16.7° /30%
Allowable Tilting Angle When Driving		10° /17%
Turntable Swing		400° non-continuous
Platform Rotation		±90°
H-Tail Swing		0m
Max Leveling Angle		16°
Max Wind Speed	12.5m/s	27.96mph
Power		
Battery	315Ah 48V	
Charger	48V/60A	
Drive Motor	Permanent magnet synchronous motor 48V	
Lift Motor	Permanent magnet synchronous motor 48V	
Auxiliary Power	Electric pump	
Hydraulic Tank Capacity	50L	
Tire		
Crawler type	K250×47×88 non-marking rubber crawler belt	
Weight		
Gross weight	4650kg	10251 lb
Ground Pressure When Driving	33.68kN/m ²	
Ground Pressure When Working (Standard)	2.05kN/m ²	
Ground Pressure When Working (Narrow)	2.45kN/m ²	
Pressure on Single Outrigger When Working	31.89KN	



Range of Motion ZX27AE